

**SPEIRS
MAJOR**

Made Of Light

**LIGHT
ARCHITECTURE**

8 Shepherdess Walk
London,
N1 7LB
United Kingdom

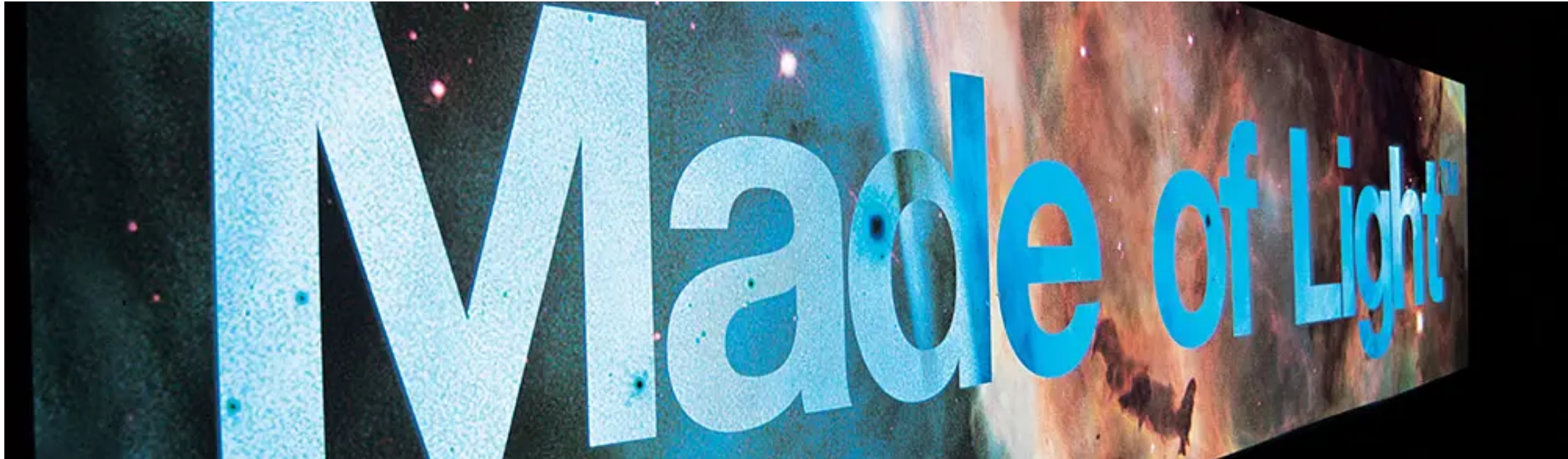
T +44 (0)20 7067 4700

Co-lab Shibuya Cast
23-21, Shibuya 1-Chome
Tokyo 150-0002
Japan

T +81 (0)3 3400 8855

info@smlightarchitecture.com
press@smlightarchitecture.com

SPEIRS MAJOR

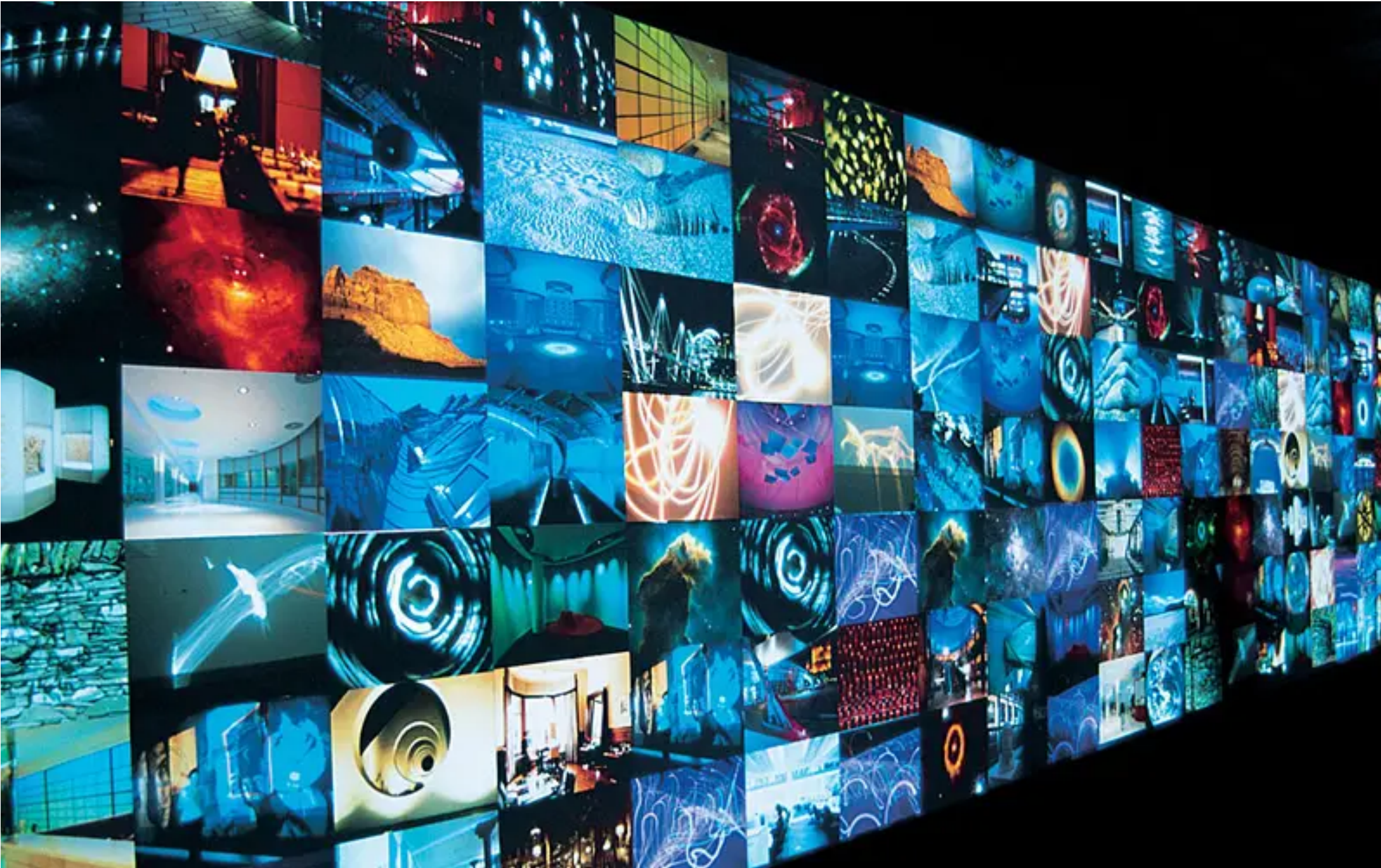


In late 2002 Speirs Major began developing an ambitious project designed not only to convey our passion for light, but to explain the possibilities of this elusive medium to clients, architects, designers and members of the general public.

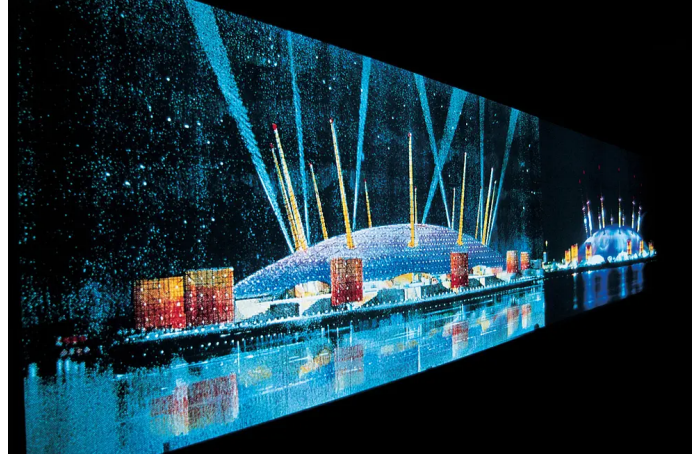
PHOTOGRAPHER
James Newton

PROJECT TEAM
Mark Major, Jonathan
Speirs, Iain Ruxton,
Philip Rose, Carrie
Donahue Bremner,
Keith Bradshaw

SPEIRS MAJOR

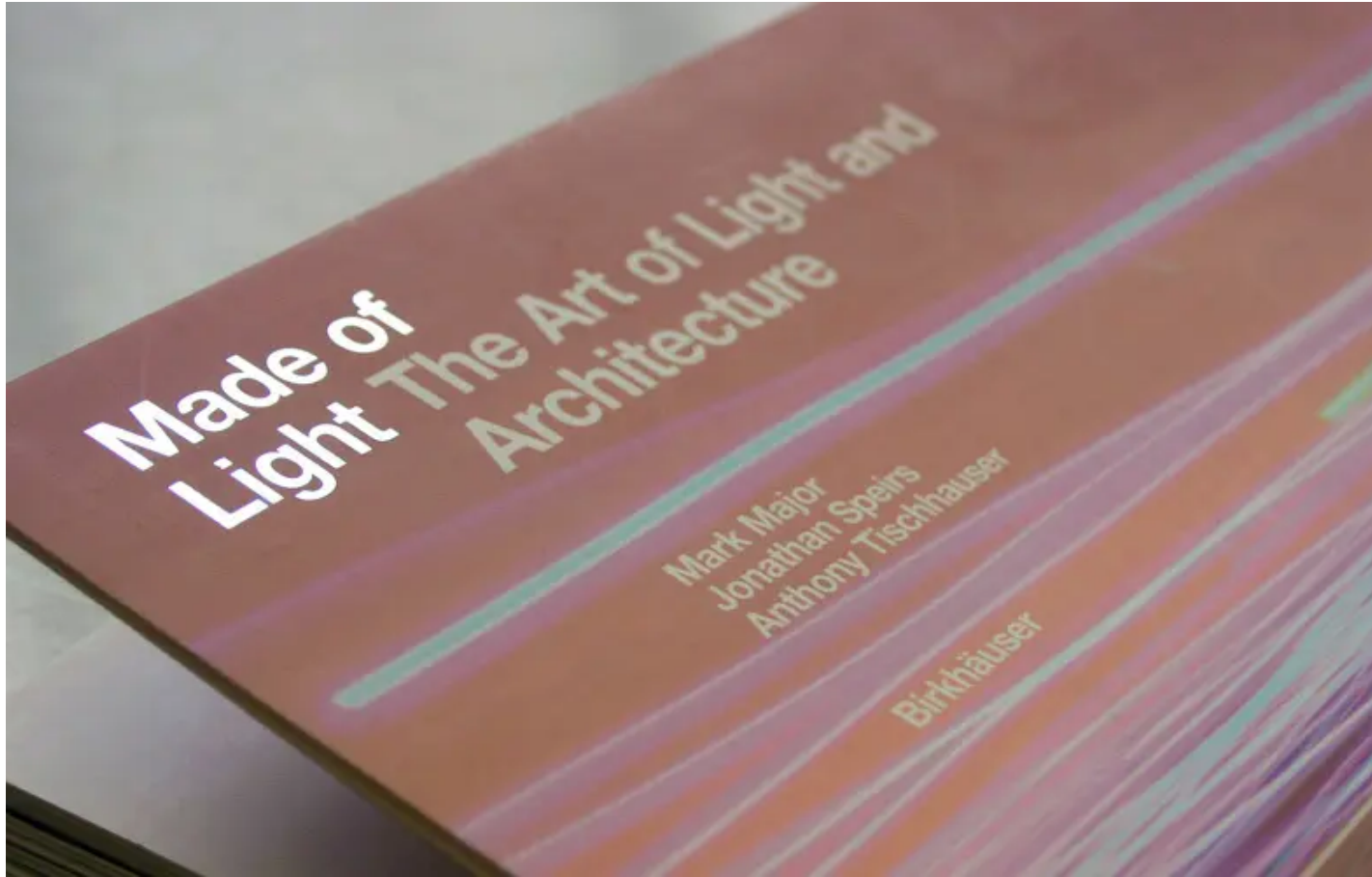


SPEIRS MAJOR



The aim was for an immersive exhibition truly 'made of light'. Using state-of-the-art equipment, we created an original, looping, 12-minute visual experience about light and architecture based on images that explored specific themes, such as shadow, colour, form and space.

SPEIRS MAJOR



At the same time, we collaborated with Zurich-based architect and writer Anthony Tischhauser on the book. Published in 2005 by Birkhauser, the Made of Light book presents a series of essays on the main themes of the visual experience and includes over 400 photographs and illustrations. While some of the content revolves around Speirs + Major projects, the majority of the material examines the field of light and architecture in a wider context.